



316 Old Hickory Blvd East, Madison, TN 37115

tel (615)612-4270 fax (615)860-9171

orderdesk@naturesgift.com

Healing Body, Mind and Spirit with Pure Essential Oils

Since 1995

www.naturesgift.com

Red Mandarin *Citrus reticulata (Citrus nobilis)*

Batch No. #BR-59328

Brazil

Monoterpenes	96.04%
limonene	66.48
γ terpinene	17.76
α pinene	2.76
myrcene	2.74
β pinene	1.96
para cymene	1.20
α thujene	1.06
isoterpinolene	1.03
α terpinene	0.55
sabinene	0.37
α phellandrene	0.09
camphene	0.02
(E) β ocimene	0.02

Aldehydes	0.89%
α sinensal	0.39
decanal	0.18
octanal	0.14
perilla aldehyde	0.06
dodecanal	0.05
citronellal	0.04
nonanal	0.03

Monoterpenols	0.55%
linalol	0.19
α terpineol	0.17
thymol	0.08
terpinen-4-ol	0.04
(E) sabinene hydrate	0.04
menthol	0.02
ascaridole	0.01

Sesquiterpenes	0.58%
(E,E) α farnesene	0.39
β caryophyllene	0.12
α selinene	0.07

Esters	0.53%
Methyl N-methylanthranilate	0.53

Other	0.03%
1-tetradecene	0.02
pentacosane	0.01

Date of Analysis: 5/30/2023

Client



Source



Red Mandarin (*Citrus reticulata blanco*)
BR-59328

Sample

Red Mandarin (*Citrus reticulata blanco*)
Batch #:..... BR-59328
Type:..... Essential Oil
CAS Number:... 8008-31-9
Nature's Gift

Client



Website

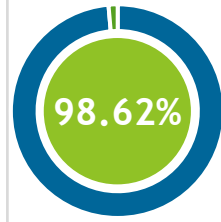
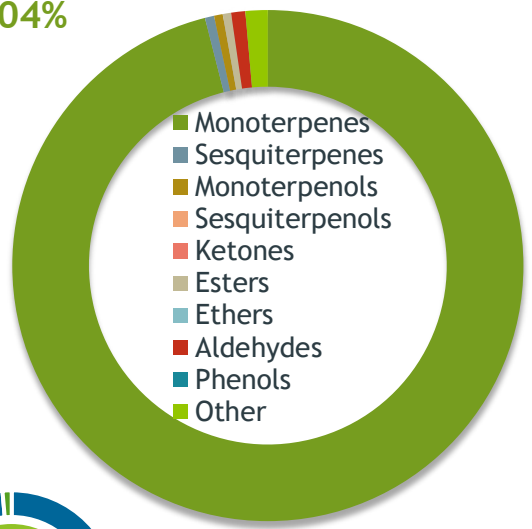


Primary

66.48% Limonene
17.76% gamma-Terpinene
2.76% alpha-Pinene

Monoterpenes

96.04%



Percentage Identified

Result



Conclusion

No adulterants, diluents, or contaminants were detected via this method. This oil meets the expected profile for genuine Essential Oil of Red Mandarin (*Citrus reticulata blanco*)

Internal Number: | EVS-5650



Essential Validation Services

747 SW 2nd Ave IMB 12 Suite 306
Gainesville, FL 32601

317.361.5044 | <https://essentialvalidationservices.com/>

Alan Christen

Monoterpenes	96.04%	96.04%
Sesquiterpenes		0.58%
Monoterpenols		0.55%
Sesquiterpenols		0.00%
Ketones		0.00%
Esters		0.53%
Ethers		0.00%
Aldehydes		0.89%
Phenols		0.00%
Other		1.41%

ESSENTIAL VALIDATION SERVICES | 747 SW 2ND AVE GAINESVILLE, FLORIDA 32601 | 317-361-5044

Client



Source

Red Mandarinine (*Citrus reticulata blanco*)

BR-59328

Total Percentage		98.62%		
Number	RT	Area %	Compound Name	Chemical Family
1	8.13	1.06%	alpha-Thujene	Monoterpene
2	8.38	2.76%	alpha-Pinene	Monoterpene
3	9.00	0.02%	Camphene	Monoterpene
4	9.95	0.37%	Sabinene	Monoterpene
5	10.12	1.96%	beta-Pinene	Monoterpene
6	10.70	2.74%	Myrcene	Monoterpene
7	11.29	0.14%	Octanal	Aliphatic Aldehyde
8	11.35	0.09%	alpha-Phellandrene	Monoterpene
9	11.83	0.55%	alpha-Terpinene	Monoterpene
10	12.19	1.20%	para-Cymene	Monoterpene
11	12.50	66.48%	Limonene	Monoterpene
12	13.21	0.02%	(E)-beta-Ocimene	Monoterpene
13	13.73	17.76%	gamma-Terpinene	Monoterpene
14	14.22	0.04%	trans-Sabinene hydrate	Monoterpenol
15	14.91	1.03%	Isoterpinolene	Monoterpene
16	15.64	0.19%	Linalool	Monoterpenol
17	15.86	0.03%	Nonanal	Aliphatic Aldehyde
18	18.02	0.04%	Citronellal	Monoterpene Aldehyde
19	19.17	0.02%	Menthol	Monoterpenol
20	19.25	0.04%	Terpinen-4-ol	Monoterpenol
21	19.94	0.17%	alpha-Terpineol	Monoterpenol
22	20.52	0.18%	Decanal	Aliphatic Aldehyde
23	23.51	0.06%	Perilla aldehyde	Monoterpene Aldehyde
24	24.42	0.08%	Thymol	Monoterpenol
25	24.82	0.01%	Ascaridole	Monoterpenol
26	28.74	0.02%	1-Tetradecene	Alkene
27	29.14	0.53%	Methyl N-methyl anthranilate	Phenolic Ester
28	29.42	0.05%	Dodecanal	Aliphatic Aldehyde
29	29.65	0.12%	beta-Caryophyllene	Sesquiterpene
30	32.79	0.07%	alpha-Selinene	Sesquiterpene
31	33.28	0.39%	(E,E)-alpha-Farnesene	Sesquiterpene
32	42.37	0.39%	alpha-Sinensal	Sesquiterpene Aldehyde
33	60.21	0.01%	Pentacosane	Alkane